



JAPAN  
SOCIETY

# ANNUAL REPORT 年次報告書

2022

2023



# Board of Directors

Chair  
Vice Chair  
Vice Chair  
President & CEO  
Secretary

**Merit E. Janow**  
**Alan S. MacDonald**  
**Masatoshi Komoriya**  
**Joshua W. Walker, Ph.D.**  
**Susan J. Onuma**

**Gerald L. Curtis\***  
*Burgess Professor of Political Science*  
Columbia University

**Ariel J. Deckelbaum**  
*Partner*  
ROPES & GRAY LLP

**Richard A. Drucker**  
*Partner*  
Cornell Capital LLC

**Bradley Edmister**  
*Partner*  
Hogan Lovells

**Louis J. Forster**  
*General Partner*  
Green Visor Capital

**Hiroshi Fujikawa**  
*SVP and General Manager of Corporate Development Division*  
ITOCHU International Inc.

**Carol Gluck\***  
*George Sansom Professor of History*  
Columbia University

**Kenzo Hakuta**  
*CEO, Founder and Director*  
Kenzo Digital Media, LLC

**Yosuke Honjo**  
*President & CEO*  
ITO EN (North America) INC.

**Keishi Hotsuki**  
*Senior Advisor*  
Morgan Stanley

**Merit E. Janow\***  
*Chair*  
Japan Society  
*Dean Emerita*  
School of International and Public Affairs  
*Professor of Practice,*  
*International Economic Law & International Affairs*  
Columbia University

**Eri Kakuta\***  
*Partner*  
PJT Partners

**Robert A. Karr**  
*Principal*  
Joho Capital, LLC

**Satoshi Kawamura**  
*President & CEO*  
Nomura Holding America Inc.

**Tetsuo Kawate**  
*President & CEO*  
Mitsubishi Corporation (Americas)

**Mark Khalil**  
*President & General Counsel*  
Sony Corporation of America

**Linda Kirkpatrick**  
*President, North America*  
Mastercard

**Masahiro Koike**  
*Managing Executive Officer*  
Tokio Marine Holdings, Inc.  
*Deputy CEO*  
Tokio Marine North America, Inc.

**Masatoshi Komoriya\***  
*Vice Chair*  
Japan Society  
*Executive Chairman of the Board*  
MUFG Americas Holdings Corporation

**Gary Kozlowski\***  
*Partner, Global Financial Services*  
Ernst & Young LLP

**Alan S. MacDonald \***  
*Vice Chair*  
Japan Society  
*Chief Client Officer, Vice Chairman*  
Citibank, N.A.

**Keiji Machida**  
*Chairman & CEO*  
Daiwa Capital Markets America Holdings Inc.

**Jun Makihara\***

**Shuji Matsuura**  
*Chairman & CEO*  
Mizuho Americas

**Theodore Miller**  
*President & CEO*  
Empire Entertainment Japan  
*President & CEO*  
Iroco Design Japan

**Thomas K. Montag**

**Gary Moriwaki**  
*Partner*  
Windels Marx

**Satoru Murase\***  
*Partner*  
Mayer Brown LLP

**Toby S. Myerson\***  
*Chairman & CEO*  
Longsight Strategio Advisors LLC

**James Nash**  
*President & CEO*  
AIG Japan Holdings KK

**Tatsuo Okazaki**  
*Vice President, Government Affairs*  
Toyota Motor North America, Inc.

**Hirofumi (Hiro) Otsuka\***  
*Managing Executive Officer*  
SMBC Americas  
*CEO*  
Americas Division

**Joseph R. Perella\***  
*Chairman Emeritus*  
Perella Weinberg Partners

**Douglas L. Peterson\***  
*President & CEO*  
S&P Global

**Richard N. Shaak**  
*President*  
STARR INSURANCE HOLDINGS, INC.

**David Snoddy\***  
*Founder & Managing Partner*  
Nezu Asia Capital Management

**Joshua N. Solomon**  
*Principal*  
New York City Department of Education

**Yuji Sugimoto**  
*Managing Director, Co Head Asia Private Equity*  
Bain Capital Private Equity Japan LLC

**Yoshiteru (Terry) Suzuki\***  
*President & CEO*  
ORIX Corporation USA

**Gary M. Talarico\***  
*Managing Director*  
Cora Street Partners

**Donald J. Toumey**  
*Partner*  
Sullivan & Cromwell LLP

**Sayu Ueno**  
*President & CEO*  
Mitsui & Co. (U.S.A.), Inc.

**Tomonori (Tom) Wada**  
*President & CEO*  
Sumitomo Corporation of Americas

**Joshua W. Walker\***  
*President & CEO*  
Japan Society  
(*Ex officio*)

**Adam F. Weissenberg**  
*Vice Chairman, Chief Global Officer Audit & Assurance; Asia Pacific Leader; US Global Office*  
Deloitte US

**Kevin Willsey**  
*Global Chairman – Investment Banking*  
JP Morgan & Co.

**Michael A. Zarcone**  
*Chairman*  
MetLife Foundation  
*Executive Vice President, Head of Corporate Affairs*  
MetLife

## PRESIDENT EMERITUS

**Motoatsu Sakurai**  
Japan Society

## SECRETARY

**Susan J. Onuma**  
*Partner*  
Ingram Yuzek Gainen Carroll & Bertolotti, LLP

## SENIOR ADVISORS

**Frederick H. Katayama**  
*Executive Vice President*  
U.S.-Japan Council

**Kazuo Koshi**  
*Advisor to the President*  
MUFG Bank, Ltd.

**Justin A. Rockefeller**  
Addepar.com  
Rockefeller Brothers Fund  
The ImPact

## HONORARY DIRECTORS

**Mikio Mori**  
*Ambassador & Consul General of Japan in New York*  
Consulate General of Japan

**J. Thomas Schieffer**  
*Founder & CEO*  
Envoy International LLC

## LIFE DIRECTORS

**Maurice R. Greenberg**  
*Chairman & CEO*  
C.V. Starr & Co., Inc.

**Richard S. Lanier**  
*President Emeritus*  
Asian Cultural Council

**Deryck C. Maughan**

**Henry A. McKinnell, Jr.**  
*Chairman*  
Accordia Global Health Foundation  
*Former Chairman of the Board & CEO*  
Pfizer Inc.

\*Denotes member of the Executive Committee

▶ **Click here**  
for current Board list

—As of June 13, 2023



Japan Society connects American and Japanese people, cultures, and societies through a global lens.

Japan Society is the premier organization connecting Japanese arts, culture, business, and society with audiences in New York and around the world.

At Japan Society, we are inspired by the Japanese concept of *kizuna* (絆)—forging deep connections to bind people together. We are committed to telling the story of Japan while strengthening connections within New York City and building new bridges beyond. In over 100 years of work, we’ve inspired generations by establishing ourselves as pioneers in supporting international exchanges in arts and culture, business and policy, as well as education between Japan and the U.S.

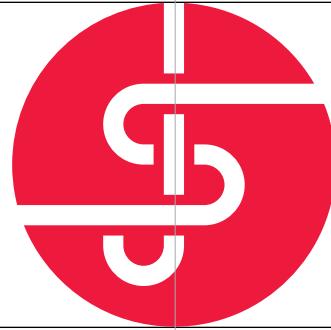
Now, more than ever, we strive to convene important conversations on topics that bind our two countries together, champion the next generation of innovative creators, promote mutual understanding, and serve as a trusted guide for people everywhere who seek to more fully appreciate the rich complexities and abundance of Japan.

From our New York headquarters, a landmark building designed by architect Junzo Yoshimura that opened to the public in 1971, we look forward to the years ahead, which will be defined by our digital and ideational impact through the *kizuna* that we build. Our future can only be enhanced by learning from our peers and engaging with our audiences, both near and afar. Please join us.





At our 2023 Annual Dinner, for the first time in our 116-year-history, we had friends and former Board Members joining us live from Tokyo at the International House of Japan — connecting 600+ people from New York to Tokyo's 70+ VIPs.



## Dear Friends and Supporters,

### President's Message

During the 78th session of the United National General Assembly, Japan Society was honored to host Japanese Prime Minister Fumio Kishida at a high-level UNGA side event bridging crucial discussions on achieving a more resilient and equitable universal health coverage. Co-organized by the government of Japan, the forum brought together key global health partners including Bill Gates, Dr. Tedros Adhanom Ghebreyesus, Catherine Russell, and Ken Shibusawa. We also welcomed Yoko Kamikawa, Japan's new Foreign Minister, who was appointed only five days before her visit, symbolizing just how vital Japan Society's mission is to global diplomacy from here in New York to Tokyo and beyond!

At our 2023 Annual Dinner, for the first time in our 116-year-history, we had friends and former Board Members joining us live from Tokyo at the International House of Japan along with their own speakers, astronaut Naoko Yamazaki of Space Port Japan Association and Cabinet Secretary Noriyuki Shikata, actualizing our new Japan Engagement Strategy and connecting 600+ people from New York to Tokyo's 70+ VIPs. Success for a nonprofit gala is not measured just by the historic \$1.7 million raised, it is in presenting our mission and story to impact the societies we serve. At a time when the balance of world power is in flux, especially in Asia, keynote speakers James Gorman of Morgan Stanley and Nobuyuki Hirano of MUFG Bank, Ltd. signify—not only through their institutional alliance but through their close personal bond—that the U.S.-Japan alliance has never been more important to each country, society, and to the world.

Our new *U.S.-Japan Women Leaders* Initiative aligns with Japan Society's longstanding mission to convene important conversations on topics that bind our two countries together, and to forge deep connections between the U.S. and Japan for positive change. The launch of our annual *Global Risks Forum* brought together high-level business leaders and experts to discuss the emerging and evolving risks that shape our world. We congratulate Performing Arts Artistic Director Yoko Shioya for her outstanding cross-cultural bridge-

building. Yoko was one of three Artist-in-Industry honorees at the Chocolate Factory's first Annual Gala, and she was just awarded the Taiwan Cultural Collaboration Medal recognizing those who have made long-term contributions to the development of Taiwanese culture. Our 16th annual *JAPAN CUTS: Festival of New Japanese Film* was a resounding success, reflecting the energy, connections, and inspiration of the Society's new Director of Film, Peter Tatara. The exhibition *Refashioning: CFGNY and Wataru Tominaga*, the first show devoted to the art of contemporary fashion at Japan Society, explored the intersections between fashion, art, and identity through the lens of Japan Society's institutional history. The second year of the *Living Traditions* webinar series, co-presented with the Japan Institute of Portland Japanese Garden, brought the best of Japanese culture to online audiences across the United States. Less visible but just as important were our Education and Family initiatives, which included the pilot year of the Japan Society School Partnerships Program—long-term, multi-year partnerships with a select group of New York City public schools from underserved communities. Last, but certainly not least, Japan Society has the the "best language classes in New York," according to *New York Magazine*.

The U.S.-Japan alliance has never been more important than in this moment of geopolitical tension, and Japan has never been more appealing or valuable as a global partner. This is true not just at the governmental level, but in civil society, which Japan Society has been doing through our mission of connecting global peoples and societies through arts and culture, business, and education, for the past 116 years. Thank you very much for all of your support, and for joining us for the future of U.S.-Japan.

Sincerely,  
Joshua W. Walker, Ph.D.  
President & CEO, Japan Society

## ジャパン・ソサエティー (JS) サポーターの皆様

### 理事長のメッセージ

第78回国連総会の会期中、JSは、より強靱で公平なユニバーサル・ヘルス・カバレッジの実現に向けた重要な議論の架け橋となるハイレベルの国連総会関連イベントに、岸田文雄内閣総理大臣をお迎えするという栄誉に浴しました。日本政府と共催したこのフォーラムには、ビル・ゲイツ博士、テドロス・アダノム・ゲブレイエス博士、キャサリン・ラッセル氏、渋澤健氏、その他政府・国際機関代表など、グローバル・ヘルスの主要なパートナーが一堂に会しました。また、新任の武見敬三厚生労働大臣、G7関係者、その他世界の主要な保健大臣、そして訪米の5日前に任命されたばかりの上川陽子外務大臣をお迎えしました。これはまさにJSの使命が当地ニューヨークから東京、そして世界へ向けてのグローバル外交にいかに不可欠なものであるかを象徴するものでした。

2023年度アニュアル・ディナーでは、創設116年初の試みとして、生中継でニューヨークと東京の会場をつなぎ、元理事を始めとした在東京のサポーターの皆様、国際文化会館でのブレックファスト・イベントとしてご参加頂きました。スペース・ポート・ジャパンの元宇宙飛行士、山崎直子代表理事と、四方敬之内閣広報官からスピーチがあり、ニューヨークから600名以上のゲストと東京での70名以上のVIPの方々をお繋ぎし、弊会の新しい「ジャパン・エンゲージメント戦略」を体現する形となりました。非営利団体として、祝賀会の成功は170万ドルというこれまでにない寄付金の額で測られるものではなく、JSの果たすべく使命の中にあり、それを具現化し、社会に影響を与え、貢献していくことにあと思っています。基調講演にはモルガン・スタンレーのジェームズ・ゴーマン氏と株式会社三菱UFJ銀行の平野信行氏をお迎えし、両氏は世界のパワーバランス、特にアジアにおけるパワーバランスが流動的である今、両社の組織的な提携のみならず親密な個人的な絆を通し、日米同盟は両国および社会、さらに世界にとって、かつてないほど重要であると呼びかけられました。

「日米女性リーダーズ・イニシアティブ」は、日米両国を結ぶトピックスに関する重要な討論を通し、前向きな変革のために日米間に深いつながりを築くことを提唱するフォーラムです。これはまさにJSが誇る、JSの長年の使命に沿ったプログラムであります。また毎年恒例の「グローバル・リスク・フォーラム」を開催し、ビジネス界のトップレベルのリーダーや専門家が一堂に会し、世界が直面する新たなリスクや進化しつつあるリスクに対しどのような対策を取るべきか、リスクの特定と分析、またその影響と動向について解説・討論が行なわれました。また、JS舞台公演部芸術監督である塩谷陽子は、その卓越した異文化間の橋渡しの貢献と功績に対して、クイーンズに拠点を置く



チョコレート・ファクトリー・シアター (CFT) 開催による第1回アニュアル・ガラにて「アーティスト・イン・インダストリー賞」を塩谷を含む3名が受賞しました。それに加え、塩谷は台湾文化の発展に長期に渡り貢献した人に贈られる「台湾文化協力賞 (中国語で「文協奨章」)」も受賞しました。日本の新作映画を集めた毎年恒例の映画祭、第16回「JAPAN CUTS〜ジャパン・カット〜」では、JS新任の映画部ディレクター、ピーター・タタラのエネルギ、コネクション、インスピレーションが十分に発揮され、大成功を収めました。また、JSのギャラリーでの展覧会「Refashioning:CFGNY and Wataru Tominaga」では、コンテンポラリー・ファッションのアートをテーマに、ファッション、アート、アイデンティティの接点をJSの歴史的視点からも探求がされた展覧会でした。ポートランド日本庭園 ジャパン インスティテュートと共催の「リビング・トラディション」ウェビナーシリーズは今年で2年目を迎え、全米のオンライン視聴者にクオリティーの高い日本文化情報を提供しました。そして、普段目にしないかもしれませんが、弊会の重要な取り組みとして教育とファミリーのイニシアチブを行っており、その一環として「ジャパン・ソサエティスクール・パートナーシップ・プログラム」の初年度を試験的に行いました。このプログラムはニューヨーク市の公立学校の中でも十分なサービスが行き届いていないエリアにある学校と長期的かつ複数年にわたるパートナーシップを組むことを目的としています。最後になりますが、JSの語学センターはニューヨーク・マガジンの「Curbed」で、「ニューヨークで最高の語学教室を提供する団体」として紹介されました。

地政学的緊張が高まっている今ほど、日米同盟の重要性が問われる時はなく、また、日本はグローバル・パートナーとして、未だかつてないほど魅力的で価値のある国という立ち位置にあります。これは政府レベルだけでなく、市民社会においても同様であり、ジャパン・ソサエティーは過去116年、芸術、文化、ビジネス、教育といった分野を通じ世界の人々と社会をつなぐという使命を基に様々な活動に取り組んできました。皆様のご支援と、日米の未来のためのお力添えに心より感謝の意を表し、結びとさせていただきます。

ジャパン・ソサエティー理事長  
ジョシュア・W・ウォーカー (政治学博士)





The ballroom at Cipriani 42nd Street.

# Annual Dinner

Japan Society's 2023 Annual Dinner took place on June 14 at Cipriani 42nd Street, with more than 600 guests attending. The gala raised over \$1.7 million, providing essential funding for the Society's programs and operations, an amount exceeded only by the Society's Centennial celebrations in 2007. This was the first year that our friends in Japan were able to join us by livestream from I-House in Tokyo for the inaugural Tokyo Annual Dinner Breakfast, sharing this very special night in New York City together with opening remarks by Kazuo Koshi of MUFG and James Kondo of I-House, and featured speakers Naoko Yamazaki of Space Port Japan Association and Cabinet Secretary Noriyuki Shikata, with Claire Mitsuru Chino of Itochu serving as Tokyo Master of Ceremonies. In New York, the evening featured a keynote dialogue between James P. Gorman, Chairman & CEO,

Morgan Stanley and Nobuyuki Hirano, Senior Advisor, MUFG Bank, Ltd., with moderation by Japan Society Board Chair Merit E. Janow, Dean Emerita, School of International & Public Affairs, Professor of Practice, International Economic Law & International Affairs, Columbia University. Morgan Stanley and MUFG were co-recipients of the Japan Society Award. Multi-instrumentalist Kaoru Watanabe wowed guests with his performance, followed by the presentation of the Japan Society Award to Masamichi Udagawa, Partner, Antenna Design, introduced by Alexandra Cunningham Cameron, Curator of Contemporary Design, Cooper Hewitt, Smithsonian Design Museum. Junko Kubo was our Master of Ceremonies for the evening, which also included a silent auction of a print by Kyohei Inukai.

## 2023年度ジャパン・ソサエティー(JS) アニュアル・ディナー授賞式

去る6月14日、CIPRIANI 42ND STREETにて、ジャパン・ソサエティー (JS) 2023年度アニュアル・ディナー/授賞式が開催され、600名以上の方にご出席いただきました。晚餐会で皆様から頂戴したご寄付は170万ドル以上となり、当協会のプログラム運営や活動に不可欠な資金になります。またこの170万ドルという額は2007年の100周年の記念式典を除けば過去最高の金額となります。今年は初めてニューヨークと東京を中継で繋ぎ、日本で同時開催されていた国際文化会館でのブレックファスト・イベントが紹介されました。東京では、株式会社三菱UFJ銀行 (MUFG) 顧問の越和夫氏と国際文化会館理事長ジェームス・近藤氏による開会のご挨拶から始まり、元宇宙飛行士でスペース・ポート・ジャパンの山崎直子代表理事と四方敬之内閣広報官による講演、司会は伊藤忠商事常務執行役員の茅野みつる氏が務められました。一方、ニューヨークでの基調講演には、モルガン・スタンレー会長兼最高経営責任者 (CEO) ジェームズ・P・ゴーマン氏と株式会社三菱UFJ銀行特別顧問平野信行氏をお招きし、ジャパン・ソサエティー会長メリット・E・ジャンノウ (コロンビ

ア大学国際公共政策大学院名誉学長、国際経済法・国際関係学教授) がモデレーターとなり、両企業グループの戦略的提携について対談形式で行なわれました。

今年のジャパン・ソサエティー賞は、モルガン・スタンレーと三菱UFJファイナンスグループに共同授与され、作曲家・楽器演奏家として活躍する渡辺薫氏の素晴らしい演奏をはさみ、ニューヨークの生活に多大な影響を与えた在NYの日本人インダストリアル・デザイナー、アンテナデザインの共同設立者兼パートナーである宇田川信学氏にも同賞が授与されました。贈呈は、スミソニアン・デザイン博物館クーパー・ヒューイットの現代デザインのキューレーターであるアレクサンドラ・カニングハム・キャメロン氏により行なわれました。当日の司会進行役は元テレビキャスターの久保純子氏。また本年度のサイレント・オークションでは、1970年代初頭に制作されたと考えられているキョウヘイ・イヌカイの貴重な版画作品が出品されました。



Left to right: Alexandra Cunningham Cameron, Curator of Contemporary Design, Cooper Hewitt, Smithsonian Design Museum; Junko Kubo, journalist; Kaoru Watanabe, multi-instrumentalist; Merit E. Janow, Dean Emerita, School of International & Public Affairs, Professor of Practice, International Economic Law & International Affairs, Columbia University; Nobuyuki Hirano, Senior Advisor, MUFG Bank, Ltd.; Hope Knight, President, CEO & Commissioner of Empire State Development; James P. Gorman, Chairman & CEO, Morgan Stanley; H.E. Mikio Mori, Ambassador and Consul General of Japan in New York; The Hon. Wilbur L. Ross, Jr., former Secretary of Commerce and former Chair of Japan Society; Joshua W. Walker, President & CEO, Japan Society; Hilary Geary Ross; Elaine Fan, Director of Asian Affairs, Governor's Office, State of New York; Masamichi Udagawa, Partner, Antenna Design; and H.E. Kimihiro Ishikane, Ambassador Extraordinary & Plenipotentiary, Permanent Representative of Japan to the United Nations.

Japan Society's Annual Dinner brings all our friends, partners, supporters, community leaders and international figures together for one magical evening in a powerful and awe-inspiring moment for U.S.-Japan.



Keynote dialogue with James P. Gorman, Chairman & CEO, Morgan Stanley, and Nobuyuki Hirano, Senior Advisor, MUFG Bank, Ltd., moderated by Japan Society Board Chair Merit E. Janow, Dean Emerita, School of International & Public Affairs, Professor of Practice, International Economic Law & International Affairs, Columbia University. Mr. Gorman and Mr. Hirano both accepted the Japan Society Award on behalf of the Morgan Stanley and MUFG partnership.

All photos © Daphne Youree

▶ **Video highlights** of the 2023 Annual Dinner.



Special guests Michi Hirata North, a pianist who performed at the 1954 Japan Society Dinner, and Sheyenne Puello, 2013 Japan Society Junior Fellows Leadership Program alumni.



Alexandra Cunningham Cameron, Curator of Contemporary Design, Cooper Hewitt, Smithsonian Design Museum, presents the 2023 Japan Society Award to Masamichi Udagawa, Partner, Antenna Design.



Acclaimed multi-instrumentalist Kaoru Watanabe provided the evening's entertainment.

**JAPAN SOCIETY**  
2023 ANNUAL DINNER  
HIGHLIGHTS



On November 2, 2022, Joshua W. Walker, Ph.D., President & CEO of Japan Society, signed a Memo of Understanding (MOU) with James Kondo, Chairman of the International House of Japan (I-House), to further the two organizations' historic cooperation.

# Japan Engagement Strategy

As a convener of the best of U.S.-Japan across industries from New York to Tokyo, Japan Society aims to capture new opportunities for growth and branding to create a broader presence in Japan through engaging with former and current Board members and corporate leaders and expanding relationships with Japanese media, government and ministries and various American and Japanese organizations.

## ジャパン・エンゲージメント戦略

ニューヨークと東京を含む日米の幅広い業界の仲介役として、元理事や現理事、また企業のリーダーの方々との交流を通し、日本での存在感を高め、また日本のメディア、政府、官庁、日米の様々な組織との関係も拡大しつつ、新たな成長の機会とブランドの確立を目指しています。



▶ **Highlights Video** from the New Year's celebration in Tokyo.



In January 2023, Tokyo Governor Yuriko Koike joined nearly 100 VIPs, longtime friends, and supporters of Japan Society, including 25 former Board Members, at a New Year's celebration at I-House welcoming Japan Society Board Chair Merit E. Janow, Dean Emerita, School of International & Public Affairs, Professor of Practice, International Economic Law & International Affairs, Columbia University.

Japan Society's robust new Japan Engagement Strategy includes the formation of a Japan Alumni Club, a strategic partnership with I-House in Tokyo, and programs for the Tokyo audience.



For the inaugural Tokyo Annual Dinner Breakfast on June 15, 2023, Japan Society's friends and supporters joined the 2023 Annual Dinner by livestream from I-House in Tokyo, sharing this very special night in New York City together with featured speakers Naoko Yamazaki of Space Port Japan Association and Cabinet Secretary Noriyuki Shikata. Claire Mitsuru Chino of Itochu served as Master of Ceremonies, and MUFG and Japan Society Senior Advisor Kazuo Koshi and I-House Chair James Kondo each made opening remarks.





# Bridge-Building

Japan Society is committed to telling the story of Japan while strengthening connections within New York City and building new bridges beyond.

## 架け橋

ニューヨーク市内でのつながりを強化しながら、日本を伝え、更にその先の未来の新たな架け橋となることに全力で取り組んでいます。



Japan Society hosted the annual conference of the National Association of Japan-America Societies (NAJAS) in August 2022, convening around 70 leaders from other Japan-America Societies around the country. Events included a special reception hosted by Ambassador Mikio Mori at the Consulate General of Japan in New York.



Japan Society President & CEO Joshua W. Walker spoke to 1,000 people at the annual membership meeting of the Portland Japanese Garden in April—and, building on an already established partnership, Japan Society and Japan Institute of Portland Japanese Garden also collaborated on an invitational Peace Symposium at Japan House on Sept. 21, 2023, the International Day of Peace, during the UN General Assembly.  
Photos © Nina Johnson

Bridge-building is a natural extension of Japan Society’s activities—from honoring Chiune Sugihara, to welcoming our fellow Japan-America Societies to Japan House in New York, and forging new ties at the Portland Japanese Garden.



An *Intimate Prelude to A Concert for Sugihara* was co-hosted by Japan Society and American Society for Yad Vashem, in cooperation with the K3 Council. The evening featured cello virtuoso Kristina Reiko Cooper, who conceptualized *A Concert for Sugihara* to commemorate the life of Chiune Sugihara, the “Schindler of Japan,” accompanied by Zac Zinger on shakuhachi, and a talk by Zalmen Mlotek, Artistic Director of the National Yiddish Theatre Folksbiene. Photos © Daphne Youree







Ken Shibusawa, Chief Executive Officer, Shibusawa and Company, Inc.; Founder and Chairman, Commons Asset Management; Founder and CEO, &Capital, Inc.; Senior Advisor, Brunswick Group, the featured speaker at *Prime Minister Kishida's New Capitalism: Why Japan Needs Its Implementation.* © Jane Kratochvil

# Business & Policy Forum

The Business & Policy Forum hosts unique public and private programs for the international business and policy community, which promote reciprocal exchange and deep engagement on issues that define U.S.-Japan relations within a global context.

## ビジネス&政策

日米の政財界より著名人を招聘して会議、講演会、パネル討論会を開催。国際ビジネスや政策に携わる人々や国際的な課題に関心を寄せる人々を対象に、日本・アジア・米国における諸問題をグローバルな視点から考察することを目的としています。



*Top Global Risks in 2023: Economics, Business & Geopolitics.* Networking reception. © Daphne Youree



The Honorable Yuriko Koike, Governor of Tokyo, addressing guests at her talk on leading Tokyo.



Left: Takeshi Niinami, Chief Executive Officer, Suntory Holdings Limited, speaking at *Suntory: Leadership & Vision.* © Daphne Youree



Right: *Top Global Risks in 2023: Economics, Business & Geopolitics.* Keynote speaker Ian Bremmer, President & Founder, Eurasia Group and GZERO Media. © Daphne Youree

The Business & Policy Forum launched as a more clearly defined and expanded space for discussion and interaction in the business and policy arena.

Japan Society welcomed The Honorable Yoshimasa Hayashi, Minister for Foreign Affairs, Government of Japan.







*Women in Leadership—Why It Matters.* Members of the audience with U.S.-Japan Women Leaders Initiative Advisory Council member Keishi Hotsuki.  
© Daphne Youree

# U.S. — Japan Women Leaders Initiative

The U.S.-Japan Women Leaders Initiative was launched with the aim of empowering women in the U.S.-Japan space. This initiative presents a diverse range of impactful events, including panel discussions featuring renowned speakers and exclusive, hands-on workshops. It serves as a valuable platform for learning, empowerment, and fostering ongoing discussions and connections.

## 日米女性リーダーズ・イニシアチブ

日米の女性活躍を推進する目的で発足した日米女性リーダーズ・イニシアチブ。トップリーダーを招き女性の地位向上をテーマに議論を深めるパネルディスカッションや、ビジネススキルに特化した少人数での実践的なワークショップを開催し、学びの場、交流の場を提供しています。



*Pitch Perfect: Find Your Unique Expression.* Workshop participants, led by communication expert Christine Clapp, engaged in an interactive two-hour program to practice and refine their communication skills.



*The Future of Work and Office Life: A Cross-Cultural Perspective.* Networking reception.  
© Daphne Youree



The U.S.-Japan Women Leaders Initiative aligns with Japan Society's longstanding mission to convene important conversations on topics that bind our two countries together, and to forge deep connections between the U.S. and Japan for positive change.



*The Future of Work and Office Life: A Cross-Cultural Perspective.* Left to right: Joshua W. Walker, Ph.D., President & CEO, Japan Society; Robin Milberg, Chief Human Resources Officer, Sumitomo Mitsui Banking Corporation; Susan Reid, Managing Director and Global Head of Talent, Morgan Stanley; and Keiko Tashiro, Member of the Board, Deputy President, Daiwa Securities Group Inc.  
© Daphne Youree

*Women in Leadership—Why It Matters.*

Left to right: Joshua W. Walker, Ph.D., President & CEO, Japan Society; Mya Fisher, Founder and Chief Executive and Transformation Officer (CETO), Global Equity Forward; Director, Richard U. Light Fellowship, Yale University; Keishi Hotsuki, Chief Risk Officer, Morgan Stanley; and Keiko Honda, Adjunct Professor and Adjunct Senior Research Scholar, School of International and Public Affairs, Columbia University.

© Daphne Youree



*Private Group Visit: Women's Leadership Development Program.* A group of women leaders from Japan, headed by U.S.-Japan Council Member Yoko Otani, met privately with Joshua W. Walker, Ph.D., President & CEO, Japan Society, and Keishi Hotsuki, Chief Risk Officer, Morgan Stanley.



*The Future of Work and Office Life: A Cross-Cultural Perspective.* Audience members ask questions during the Q&A session.  
© Daphne Youree





*Sailor Suit and Machine Gun* (Shinji Somai, 1981), part of the 2023 *Globus Film Series*,  
*Rites of Passage: The Films of Shinji Somai*.  
 © 1981 Kadokawa Corp.

# Film

Japan Society Film presents year-round screenings spanning eternal classics of Japanese cinema, rarely shown treasures and contemporary masterpieces. Major premieres, previews and member-only events featuring captivating new films bring fresh audiences and press attention to Japan Society. Expertly curated series showcase the work of Japan's seminal actors and directors as well as their contemporaries and cultivate a deep appreciation and understanding of Japanese film culture among American audiences.

## 映画

日本映画の永遠の名作から、めったに上映されない貴重な作品、現代の傑作に至るまで、年間を通して上映しています。魅力的な新作映画をフィーチャーした大規模なプレミア上映、試写会、会員限定のイベントは、新たな観客を惹きこみ、マスコミの注目を集めています。専門的に厳選されたシリーズでは、日本の独創的な俳優や監督、また同時代の人たちの作品を紹介し、アメリカの観客に日本映画の文化に対する理解と認識を深める機会を提供しています。



*Kagero-za* (Seijun Suzuki, 1981), screened as part of the *Seijun Suzuki Centennial* series.  
 © 1981 presented by LittleMore Co., Ltd.



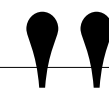
Opening night reception for the 2023 *Globus Film Series*,  
*Rites of Passage: The Films of Shinji Somai*.  
 © Daphne Youree



*All About Lily Chou-Chou* (Shunji Iwai, 2001),  
 part of the series *Love Letters: Four Films by Shunji Iwai*.  
 © 2001 Lily Chou-Chou Partners

Special screenings and premieres of *Bullet Train* and *Shin Kamen Rider*, as well as series showcasing director Shinji Somai and Women Filmmakers from *JAPAN CUTS* highlighted the 2022-23 film season.

Merch booth at the special screening of *Destroy All Monsters* (Shiro Honda, 1968), co-presented with the Tribeca Festival.  
 © Daphne Youree



I can say with absolute conviction that no Japanese filmmaker makes a film without being conscious of Shinji Somai's existence”

—Director Ryusuke Hamaguchi (*Drive My Car*)  
 on *Rites of Passage: The Films of Shinji Somai*

Guests pose with cosplayer at the North American Premiere of Hideaki Anno's *Shin Kamen Rider*.  
 © Daphne Youree







Installation view of *Refashioning: CFGNY and Wataru Tominaga*.  
Photo © Naho Kubota.

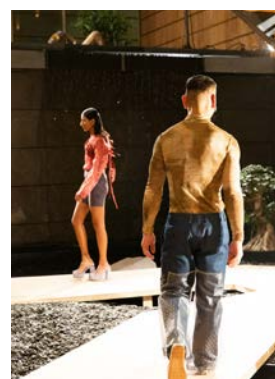
# Gallery

Japan Society Gallery is the premier institution in the United States for the presentation of Japanese art and culture, with groundbreaking exhibitions that foster a broader understanding and appreciation of Japan's contributions to global artistic heritage.

► ***Refashioning: CFGNY and Wataru Tominaga***, Nov. 18, 2022-Feb. 19, 2023, and ► ***Kyohei Inukai***, Mar. 17-June 25, 2023, were both organized by Japan Society.

## 展覧会

日本の芸術と文化を紹介する米国随一の機関です。世界の芸術遺産への日本の貢献をより広く理解・鑑賞していただくために先駆的な展覧会を開催しています。



Runway performance— CFGNY (Concept Foreign Garments NewYork) presented a new collection inspired by their ongoing collaboration with tailors in Ho Chi Minh City.  
Photo © Nick Sethi.



CFGNY artists at the press preview for *Refashioning: CFGNY and Wataru Tominaga*.



Tominaga and CFGNY's designs offer new skins, letting us see ourselves changed at a moment when change increasingly feels impossible. And yet what 'Refashioning' pursues is not so much the thrill of feeling distinguished in a crowd: It invites us to face the much harder challenge of fully occupying the flesh that we are in."

— Danielle Wu, *Artforum*  
on *Refashioning: CFGNY and Wataru Tominaga*



Installation view of *Kyohei Inukai*, with *sumi-e* inspired works.  
Photo © Naho Kubota.

An exploration into the art of fashion and the re-envisioning of an unknown artist defined our two Gallery exhibitions.



"Inukai's playful silkscreen prints are filled with vibrant colors, shapes, and lines. In one untitled painting from 1978, a parabola made of deep red as it changes to orange is set against various contrasting blocks of blue with a red dot at its center. The overall effect is mesmerizing. Surrounding that work, several works on papers, framed in light wood, lean against custom-built shelves, in the same light wood."

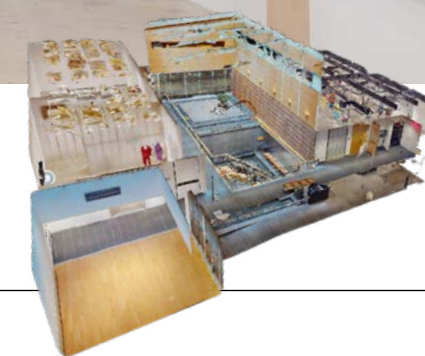
—Xintian Wang, *ARTnews*  
on *Kyohei Inukai*



Installation view of *Kyohei Inukai*.  
Photo © Naho Kubota.

Online 3D tours are available for both exhibitions by clicking the links below.

► ***Refashioning: CFGNY and Wataru Tominaga***  
► ***Kyohei Inukai***







Pulitzer Prize-winning composer David Lang combined and reimagined three texts by Ryunosuke Akutagawa for *note to a friend*, the world premiere of a new chamber opera directed by theater luminary Yoshi Oida starring legendary New York vocalist Theo Bleckmann that addressed humanity's eternal fascination with death, love, family and suicide.  
© Richard Termine

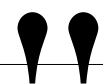
# Performing Arts

The Performing Arts Program introduces performers from Japan's contemporary and traditional music, dance and theater scenes and commissions non-Japanese performing artists to create works on themes relating to Japan. Many distinguished artists have performed in the Society's 260-seat theater and on Society-produced North American tours.

During the recent season, alliances in art were showcased through magical creations arising from a fusion of Japanese and American imaginations. Drawing inspiration from Japanese literature, history, and rituals, both Japanese and non-Japanese artists collaborated to bring their unique creativity to each performance. Notably, the world premiere of the chamber opera *note to a friend*, commissioned by Japan Society, featured Pulitzer Prize-winner David Lang's composition and was directed by theater luminary Yoshi Oida. Co-produced with Tokyo Bunka Kaikan, this opera was inspired by three texts from renowned Japanese novelist Ryunosuke Akutagawa.

## 舞台公演

最高峰の演者による古典芸能から、最先端の演劇、ダンス、音楽まで、第一線の日本の舞台作品と舞台芸術を米国に招聘。JS館内の260席の劇場で年間を通して主催上演する他、北米ツアーをプロデュース。日本の若手演出家・振付家には国際的キャリアへの登竜門として、また米国のアーティストに対しては日本をテーマにした新作委嘱の機関として、日米双方の舞台芸術界に比類の無い貢献をしています。



“Most notable was how Lang's postminimal composition strategically aligned each performer... in a very rich and beautiful atmosphere of continuous music paired with the libretto. In fact, every moment of this opera was an active connection to the music, with every single note being excruciatingly heartfelt, thoughtful and penetrating to the soul.”

— Jennifer Pyron  
for *Opera Wire* on *note to a friend*



“Having just experienced the unboundedness of smoke that blew in from Canada's wildfires to blanket the Midwest and the East Coast, I pondered 'Extinction Rituals'... Our interdependence with the environment had never felt more real.”

— Karen Greenspan  
for *Fjord Review* on *Extinction Rituals*

It was a gala season of honors, awards and creative cross-cultural bridge-building in the performing arts.



For *9000 Paper Balloons*, New York-based Japanese artist Maiko Kikuchi and American puppeteer Spencer Lott blended puppetry, animation and masks in a poetic and eerie performance inspired by Imperial Japan's stranger-than-fiction secret weapons that floated over America during WWII. © Maria Baranova.



Ryunosuke Akutagawa's short story *The Dragon*, in a stage portrait told through the traditional puppetry style *kuruma ningyo* in *AKUTAGAWA*, part of a five-story-long international collaboration between puppeteers Koryu Nishikawa V (Tokyo) and Tom Lee (Chicago), with live music by Yukio Tsuji (New York).  
© Richard Termine



Directed, choreographed and designed by Ximena Garnica and Shige Moriya, *Extinction Rituals* was inspired by acts of remembrance celebrating the life and loss of animals, plants and environments, featuring an original score by Oscar-nominated composer Kaoru Watanabe, the powerful voice of Colombian singer Carolina Oliveros, and the butoh-rooted work of the LEIMAY Ensemble.  
© Maria Baranova.



Members of the Kita Noh School performed two works from noh theater's classical repertoire: *Kotei (The Emperor)*, shown here, and *Makura Jido (Chrysanthemum Boy)*.  
© Ayumi Sakamoto



“If you suspend your disbelief and apply your imagination, these ancient plays cease to be museum artifacts and pulse with feeling. And when women in the audience are wearing kimono, the time between then and now seems to vanish like the ghost of a man.”

— Barbara Newman  
for *Dancewatch* on *Kotei | Makura Jido*



Architect Shigeru Ban with moderator Matilda McQuaid, Acting Director of Curatorial and previously Head of Textiles at Cooper Hewitt, Smithsonian Design Museum at *Shigeru Ban: Timber in Architecture*.  
© Daphne Youree

# Talks+

Talks+ introduces vital issues and trends in Japanese culture, inviting leading pioneers and professionals to engage with and explore diverse topics including Japanese art, cuisine, innovation and technology. Events are hosted in a variety of formats. At on-site programs, audiences interact with speakers during intimate lectures, view onstage presentations, experience hands-on workshops, enjoy delicious foods and drinks at tastings and meet speakers during post-event receptions. Virtual programming introduces Japanese trends and traditions to a global audience through interactive online talks, workshops and classes.

## トーク+

デザイン、食、文芸、ポップ・カルチャー、テクノロジー、伝統工芸等の文化一般から教育や環境などの社会問題に至るまで、幅広いテーマを取り上げて米国の人々に日本の多様な面を紹介するプログラム。著名人や識者・専門家を招いたパネルトークからデモンストレーションや試食を交えた講演会やワークショップまで、テーマに応じた様々な形態で開催しています。会場での対面イベントでは試食やミニ展覧会を交えたイベントを開催し、オンラインではワークショップやトークイベント等を世界中から参加する有識者と共に世界中のオーディエンスに向け発信しています。

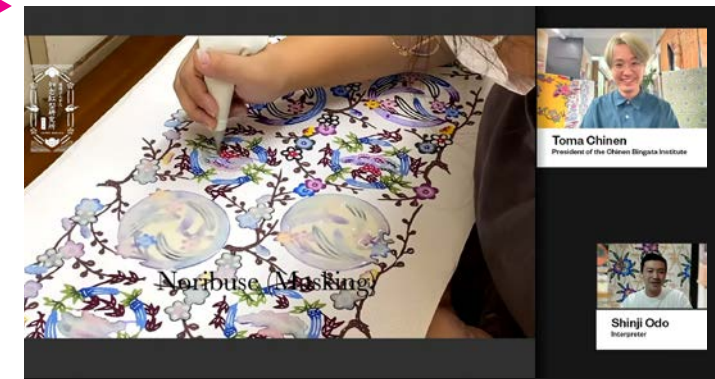


Kanagawa Prefecture Governor Yuji Kuroiwa at an invitational event.

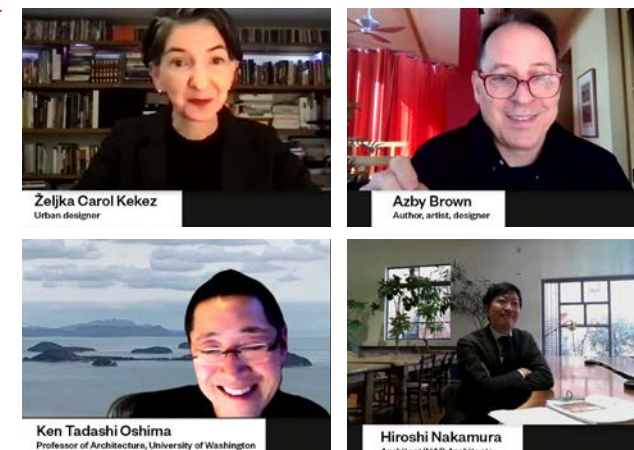


Guests at the Annual Sake Lecture & Tasting: *In Search of the Perfect Sip*.  
© Daphne Youree

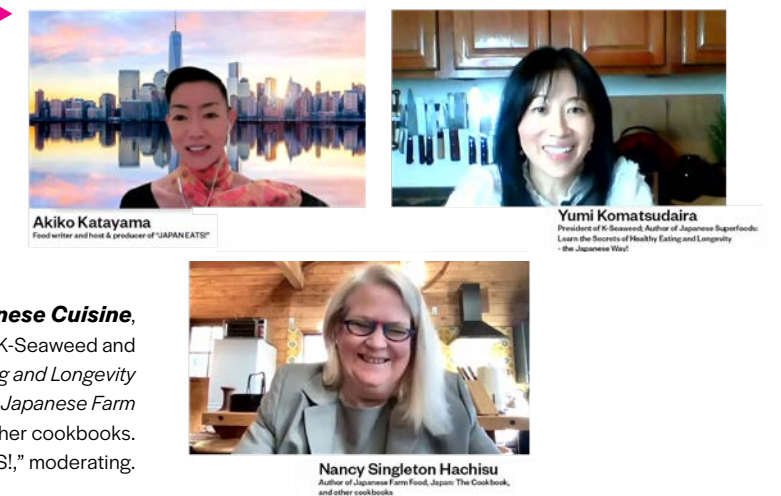
Talks+ brought the best of Japanese culture to New York audiences, as well as special initiatives and the second season of the *Living Traditions* series.



► **Bingata Textiles: Preserving a Royal Tradition in Okinawa**, part of the *Living Traditions* webinar series, with Ginny Soenksen, Director, Madison Art Collection and Lisanby Museum, and Touma Chinen, 10th generation head of the Shimujiibu line of the Chinen family of Bingata craftsmen; President of the Chinen Bingata Institute. Dr. Masato Ishida, Director, Center of Okinawan Studies, University of Hawai'i, Mānoa, moderating.



► **Talking Sustainability—Ancient Wisdom, Modern Practice**, a *Living Traditions* webinar with Azby Brown, author, artist and designer and Ken Tadashi Oshima, Professor of Architecture, University of Washington. Željka Carol Kekez, urban designer, moderating.



► **Seasonality, Superfoods and Other Secrets of Japanese Cuisine**, a *Living Traditions* webinar with Yumi Komatsudaira, President of K-Seaweed and author of *Japanese Superfoods: Learn the Secrets of Healthy Eating and Longevity – the Japanese Way!* and Nancy Singleton Hachisu, author of *Japanese Farm Food, Japan: The Cookbook* and other cookbooks. Akiko Katayama, food writer and host & producer of “JAPAN EATS!,” moderating.

### Japanese Animation in a Global Era

“The information was very interesting and filled with things that you rarely hear about. I loved hearing the facts from people who take this genre seriously from economic, entertainment and social settings.”

### Just Enough—Finding the Essence of Japanese Design

“I loved learning about the cultural background of valuing beauty/function! From a stone to a silk textile, the attitude that anyone, in any circumstances can love beauty truly moved me.”





*Setsubun*—Bean Throwing workshop at PS1 147, part of a monthly series of in-person workshops introducing seasonal traditions and themes from Japanese culture to elementary school students.

# Education & Family Programs

Education & Family Programs spark interest in Japan through a suite of offerings including teacher professional development programs, school programs and partnerships, and family programs as well as a student exchange program. Our interactive website, *About Japan: A Teacher's Resource*, provides educational resources to users throughout the world. [aboutjapan.japansociety.org](http://aboutjapan.japansociety.org)

## 教育

米国の初・中等教育者を対象にしたセミナー、学校向けプログラムやパートナーシップ、また高校生対象の国際交流プログラムなどを通じて、日米相互理解や日本文化の学習の関心を高めることを目的にしています。教育者向けのウェブサイト(AboutJapan.Japansociety.org)では、日本に関する英語の教材情報を提供。ファミリー・プログラムでは、年中行事などの参加型のプログラムを通して日本を紹介しています。



Children take to the stage for a taiko drumming mini-workshop during our *Oshogatsu*: Japanese New Year's Celebration.



“Thanks to your [school] partnership our students have been exposed to a new culture, a new language, new customs, and a new window to the world has opened. This was an experience they will always remember.”

— Japan Society School Partnership Teacher



*Edamame Champ*: Japanese Food Workshop for JSSP High School Students with Bronx Collaborative High School and The Young Women's Leadership School of East Harlem.

## Education and Family initiatives saw the return of in-person family events and the pilot year of the Japan Society School Partnership Program.



PS 147 Japanese Dual Language Program students get a close look at artwork by Kyohei Inukai during a guided Gallery Tour.



“As we Fellows, who are active all over Japan and all over the world, came together to share our knowledge, I felt with a renewed sense of importance the need to ‘think globally, act locally.’”

—Japan Society Junior Fellows Leadership 10th Anniversary participant



*Introduction to Traditional Japanese Theater: A Noh Workshop* for JSSP High School Students with Bronx Collaborative High School and The Young Women's Leadership School of East Harlem. © Ayumi Sakamoto

A teacher speaks with guest lecturer Dr. Kazuto Suzuki after his talk on Contemporary Japan during a teacher conference.







# Language Center

The Language Center offered 13 comprehensive levels of Japanese language including JLPT preparation, kanji and specialized courses in 2022-23. Other courses included shodo (Japanese calligraphy), English for native Japanese speakers (ESL), a Japanese-language teacher training program, Japanese for ages 12-15, and weekend intensives. Additional programs included language exchange events, trial lessons in Japanese and English, and workshops on hiragana, katakana, kanji and onomatopoeia, plus Japanese business etiquette and a crash course for travelers to Japan. Private lessons were available at all levels, and offsite Japanese courses and etiquette workshops were offered to local companies upon request.

In total, 399 courses, workshops, and events were offered to over 3,800 participants during FY22-23. Most programs were held online, a change since the beginning of the pandemic, with more in-person courses gradually being offered.

## 語学センター

米国最大規模の日本語教育機関として、受講者の能力にあわせた13段階の日本語教室をはじめ、日本語能力試験準備コース、会話、漢字、日本のドラマ、日本の時事ニュース、ビジネス用敬語、アニメなど、専門性を持たせたクラスも完備しており、年間約399の講座を開講し、のべ3800人以上が受講しています。また、書道、日本人対象の英会話、日本語教師養成講座、週末集中講座の他に、語学交換イベント、初級日本語及び英語体験講座、ひらがな、カタカナ、漢字、オノマトペのワークショップ、ならびに旅行者向けの集中講座や日本のビジネスエチケットの講座を設けています。その他、企業派遣プログラムやプライベートレッスンも提供しています。パンデミック以来、ほとんどのプログラムはオンライン授業ですが、対面授業のクラスも徐々に増えつつあります。



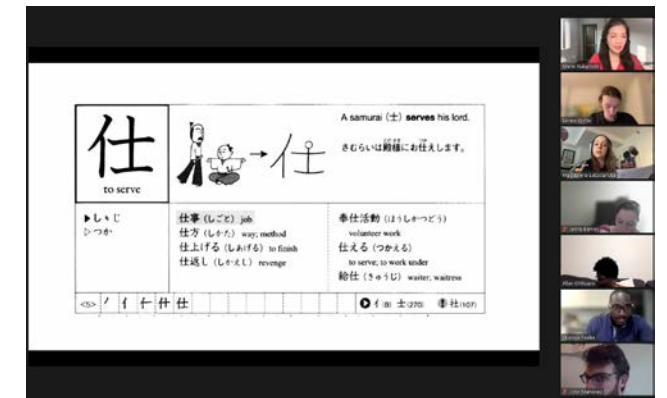
As *New York Magazine* wrote, Japan Society has “the best language classes in New York!”

### The C.V. Starr Library

The C.V. Starr Library contains approximately 14,000 volumes on Japan and U.S.-Japan relations, primarily in English. Use of the library is limited to Japan Society members and Language Center students.

### CVスター図書館

英語の書籍を中心に、日本および日米関係に関する約1万4000冊の書籍を所蔵しています。図書館の利用者をJS会員と語学センター受講者の方々に限り、きめ細かいサービスと静かな環境を提供しています。







Special preview screening of David Leitch's *Bullet Train*.

# Celebrations & Explorations

Special events and upper-level membership activities celebrate and explore the rich culture of Japan.

## セレブレーション&エクスプロレーション

日本の豊かな文化を祝賀し、探求する機会を提供する、上級会員向けのプログラム・特別イベントです。



Ring in the Year of the Rabbit at the annual New Year's Party.  
© Daphne Youree



From Gallery openings and special screenings to behind-the-scenes tours and excursions, Japan Society members experience the best of Japan in New York and beyond!



Cocktails and tour of Kyohei Inukai exhibition.



*Ichigo-ichi-e* Encounters at Globus Washitsu, with Sachiyo Takahashi.



Member preview of *Refashioning: CFGNY and Wataru Tominaga*.  
© Zhen Qin



Member tour of Nakashima Studio and Raymond Farm in New Hope, PA, with Mira Nakashima (center).





## Japan Society's Murase Room

has two beautiful new doors, imagined, manufactured, and installed by long-time Japan Society members and architectural consultant Koko Architecture + Design, with our deep gratitude and thanks for the generous support of Board Member Satoru Murase. The Murase Room doors were constructed from the traditional Japanese method of treating wood called *shou sugi ban* (also called *yakisugi*), which has preserved the deep grains and the weathered texture of the Japanese cedar (*hinoki*) The oil rubbed bronze door hardware was inspired by the Japanese paper craft of origami.

## Thank you to all of our supporters!

Japan Society is supported by our individual members, corporate members, Circle of Friends members, John D. Rockefeller 3rd Society, corporate sponsors, and foundation and government grants.

Join us! [japansociety.org/join](https://japansociety.org/join)  
Donate! [japansociety.org/donate](https://japansociety.org/donate)

# Circle of Friends

## DIRECTOR'S CIRCLE

Anonymous  
Mark Steven Barres  
Mr. and Mrs. Randall Chafetz  
Peggy and Dick Danziger (G)  
The John and Miyoko Davey Foundation  
Mark F. Goldfield and Mary E. Hatch

## LEADERSHIP CIRCLE

Mrs. Kiyoko Ohata Brown  
Fred Eychaner  
The Globus Family (F)(P)  
Catherine Heald and Donald Heald  
Mr. Christopher Hong  
Dr. Nancy C. Maruyama  
Thierry Porté and Yasko Tashiro (G)  
David and Susan Rockefeller  
Starry Night Fund  
Dr. Jeanette C. Takamura (P)  
Nancy and Joe Walker

## BENEFACTOR CIRCLE

Shin and Maho Abe (G)  
Ms. Ayumi Arafune (F)  
Barbara Bertozzi Castelli (G)  
Mr. Robert Cory and Mr. Shuichiro Takeda  
Ms. Jane DeBevoise (G)  
Mr. George Gallagher  
Brendan and Jenifer Garvey  
Laurel Gonsalves (F)(G)  
David S. Howe (F)(G)  
Mr. Timothy J. Hower (F)  
Dale A. Jenkins and Sandra Panem  
Akiko Koide and Shohei Koide (F)  
Frodo and Sam Krull  
Taishi Kushiro and Natsuko Yamazaki  
Mrs. Jane Lombard (G)  
Susan McCormac (P)  
Ms. Akiko Mikumo and Ms. Asako Mikumo (P)  
Edward and Ann Niehoff  
Hiroko Onoyama (E)(P)  
Mr. Eugene E. Reilly and Ms. Marlene Rosenthal

Ronin Gallery NYC (G)  
Richard and Momona Royce (E)  
Mr. Frederick H. Schultz, Jr. and Ms. Carole Aoki (G)  
Paul and Yoshiko Sheard  
Ms. Matsuko Shibuya  
Dr. and Mrs. Carl F. Taeusch II (P)  
Mr. David Toberisky (F)  
Roger L. Weston

## PATRON CIRCLE

Ms. Hope Aldrich and Mr. Michael B. Jeffers  
An Anonymous Fund at Aspen Community Foundation  
Anonymous (2)  
Mrs. Ayumi Aratune (F)  
Mike Audet and Saki Tanaka (F)  
Ms. Pamela Bejsovec  
Myer Berlow and Deborah Barr (G)  
Graeme Birchall and Katya Hansen  
Jim and Yuko Brumm  
Mr. and Mrs. Jeffrey Catanzaro (F)  
Dilipkumar Chauhan  
Mr. David C. Chou  
Mr. Seth Coren and Yana Coren  
Dr. Vincent T. Covello and Mrs. Carol Mandel  
Dr. Raymond Daddazio and Ms. Sawako Yamaguchi  
Mrs. Anne N. Jones Dawson  
Mr. Robert L. Dilenschneider  
Jennifer Gordon and Richard Shanley (P)  
Wendy and Leeds Gulick  
Lesley Nan Haberman (E)  
Ms. Patricia Hallstein and Mr. Axel Kramer  
Mr. Johnathan Hayden  
Ms. Tracey Hecht and Mr. David Smilow  
Dr. and Mrs. Thomas M. Heffner  
Michi Hirata North  
Professor Keiko Honda (G)  
Glenn Hubbard  
Dharshini Iolanthe Sivakumaran (F)  
Dr. Bic Kanayjorn  
Ms. Pamela Keld and Mr. Mark Imhof (G)

Airi Kohlbach and Griffin Smith (P)  
Ms. Ichun Lai  
Ms. Diane Lamonaca  
Paula S. Lawrence (P)  
Mr. Samuel Lee and Mr. Jeffrey Steen  
Monica and Edward Lenci (G)  
Mr. Leonard M. Levie (P)  
Ms. Sarah Lubman  
Mr. Marc Mailhot (G)  
Ms. Yoko Makino  
Geoff and Fumi Matters (F)  
The Masako Mera and Koichi Mera, PhD  
Fund for Education and the Arts  
Satoko Miyake and Aaron Nir (G)  
Etsuko O. Morris  
Miyeko Murase (G)  
Ms. Atsuko Murayama Shilowitz  
Marjorie Neuwirth  
Michael and Cynthia North  
Yoko Okamoto and James Dell'Olio (F)  
Pamela Perlman  
Joseph Rajaratnam (F)  
Ms. Estelle and Mr. Andrew Ross (E)  
Mr. Jonathan Rouner and Ms. Katrin Rouner  
Mrs. Lyndley M. Schwab and Mr. Samuel C. Schwab (P)  
Mr. Bradley Smith and Ms. Mami Tsuchiya  
Mr. Michael W. Sonnenfeldt (G)  
Dr. Patricia M. Sovern  
Kiyoka Tanaka  
Nora and David Tezanos (G)  
William K. Tomita (G)  
Mrs. Bette Sue Wadsworth and Mr. Jack Wadsworth  
Kenneth R. Weinstein, PhD  
Hua Zhou (G)

**(E) Friends of Education**  
**(F) Friends of Film**  
**(G) Friends of Gallery**  
**(P) Friends of Performing Arts**



# Supporters

July 1, 2022—June 30, 2023

## \$150,000 AND ABOVE

All Nippon Airways Co., Ltd.  
Booth Ferris Foundation  
Citi  
The John and Miyoko Davey Foundation  
MetLife Foundation  
Morgan Stanley  
Mitsubishi UFJ Financial Group (MUFG)

## \$100,000 AND ABOVE

Deloitte  
Government of Japan  
The Japan Foundation  
Mizuho Americas  
ORIX Corporation USA  
Doug and Teresa Peterson  
Toyota  
Xcoal Energy & Resources

## \$75,000 AND ABOVE

AIG  
FGS Global  
Howard Gilman Foundation  
Mastercard  
Mitsubishi Corporation (Americas)  
Mitsui & Co. (U.S.A.), Inc.  
New York City Department of Cultural Affairs  
Sullivan & Cromwell LLP  
Sumitomo Corporation of Americas

## \$50,000 AND ABOVE

Anonymous  
Association of Performing Arts Professionals  
Bain Capital  
Davis Polk & Wardwell LLP  
ITO EN (North America) INC.  
JPMorgan Chase  
Mr. Kazuo Koshi  
Makioka Foundation  
MetLife  
New York State Council on the Arts  
Nomura America Foundation  
S&P Global  
Shiseido Americas  
Sony Corporation of America  
Sumitomo Mitsui Banking Corporation  
Sumitomo Mitsui Trust Bank, Limited  
United States-Japan Foundation

<sup>M</sup> Japan Society gratefully acknowledges donors who have had their contributions matched by their employer.

## \$25,000 AND ABOVE

An Anonymous Family Foundation  
Canon U.S.A., Inc.  
Daikin U.S. Corporation  
Daiwa Capital Markets America Holdings Inc.  
Element Capital Management LLC  
Ernst & Young LLP  
Mr. Louis J. Forster  
Hogan Lovells  
ITOCHU International Inc.  
KPMG LLP  
Ms. Yoko Makino  
Marubeni America Corporation  
Mayer Brown LLP  
Mr. Toby S. Myerson  
PJT Partners  
PwC  
Joshua and Geula Solomon  
The Starr Foundation  
Suntory America Inc.  
Tokio Marine Group

## \$15,000 AND ABOVE

Anonymous  
Bloomberg Philanthropies  
Mr. and Mrs. Randall Chafetz  
Cornell Capital LLC  
Peggy and Dick Danziger  
Empire Entertainment  
The Estée Lauder Companies Inc.  
Hitachi America, Ltd.  
Mr. Keishi Hotsuki  
The Japan Foundation, New York  
Kohn Pedersen Fox Associates PC  
Mr. Thomas K. Montag  
Morgan, Lewis & Bockius LLP  
Satoru and Hiroko Murase  
National Association of Japan-America Societies, Inc.  
Nippon Steel North America, Inc.  
Paul, Weiss, Rifkind, Wharton & Garrison LLP  
Thierry Porté and Yasko Tashiro  
Sojitz Corporation of America  
Sompo Holdings, Inc.  
TAK Development, Inc.  
Yen Press LLC

## \$10,000 AND ABOVE

Mark Steven Barres  
Consulate General of Japan in New York  
Ariel and Cathy Deckelbaum  
Mr. and Ms. Richard A. Drucker  
Bradley K. Edmister, Esq.  
Eisai Inc.  
Epstein Becker & Green, P.C.  
The Fan Fox and Leslie R. Samuels Foundation  
Fujisankei Communications International, Inc.  
The Globus Family  
Mark F. Goldfield and Mary E. Hatch  
Glenn Hubbard  
Merit E. Janow<sup>M</sup>  
JETRO New York  
The Jim Henson Foundation  
Ms. Eri Kakuta  
Kikkoman Corporation  
Kodansha USA Publishing, LLC  
Mr. Gary J. Kozlowski  
Mr. Alan S. MacDonald  
Mitsubishi Chemical America, Inc.  
Mitsubishi Heavy Industries America, Inc.  
Monstarlab Americas  
Etsuko O. Morris  
MUFG Securities Americas Inc.  
Oliver Wyman  
Orrick, Herrington & Sutcliffe LLP  
Pacific Bays Capital LLP  
Paul Hastings LLP  
Sompo International  
Ms. Donna Sternberg  
Mr. Donald J. Toumey  
Windels Marx Lane & Mittendorf, LLP

## \$5,000 AND ABOVE

Advantage Partners, Inc.  
American Honda Motor Co., Inc.  
Anonymous  
Bank of Japan  
Central Japan Railway Company  
Ms. Anla Cheng-Kingdon  
Mr. Philip M. Darivoff/ Vibrant Capital Partners, Inc.  
DBJ Americas Inc.  
DNP Corporation USA  
Fred Eychaner

Fisher Phillips, LLP  
Catherine Heald and Donald Heald  
Heidrick & Struggles, Inc.  
IHI Americas Inc.  
Inukai Estate  
Izumibashi USA  
Japan Bank for International Cooperation  
Japan Securities Dealers Association  
Kanagawa Prefectural Government  
Kaneka Americas Holding, Inc.  
Mark E. Kingdon  
Littler Mendelson, P.C.  
Mr. David A. McCreery  
Mid Atlantic Arts Foundation  
Mitsubishi UFJ Trust and Banking Corporation  
Mitsui Sumitomo Marine Management (U.S.A.), Inc.  
Mizuho Research & Technologies, Ltd.  
Nagashima Ohno & Tsunematsu NY LLP  
Nikkei America, Inc.  
Nippon Life Group  
The Norinchukin Foundation  
NTT America, Inc.  
NTT DOCOMO USA, INC.  
NYK Group Americas Inc.  
David and Susan Rockefeller  
Starry Night Fund  
Sumitomo Chemical America, Inc.  
Dr. and Mrs. Carl F. Taeusch II  
Dr. Jeanette C. Takamura  
Gary M. Talarico and Linda W. Filardi  
Tokai Tokyo Securities (USA), Inc.  
William K. Tomita  
Toray Industries (America), Inc.  
Toyota Tsusho America, Inc.  
Vilcek Foundation  
Jack and Susy Wadsworth

## \$2,500 AND ABOVE

Aozora Bank, Ltd.  
Becker, Glynn, Muffly, Chassin & Hosinski LLP  
Brother International Corporation  
Coqui-san LLC  
Mrs. Jane B. DeBevoise  
Faegre Drinker Biddle & Reath LLP  
Mr. George Gallagher  
Mr. Steven Giordano and Ms. Luisa Bertoli



# Supporters

Professor Carol Gluck  
Laurel Gonsalves  
Harkness Foundation for Dance  
Mr. Timothy J. Hower  
J.C.C. Fund of the Japanese Chamber of Commerce and Industry  
Japan Airlines  
Japan Local Government Center  
Japan National Tourism Organization  
Jiji Press America, Ltd.  
Kajima U.S.A. Inc.  
Kawasaki Heavy Industries (USA), Inc.  
Kikkoman Sales USA, Inc.  
Kyodo News America, Inc.  
Mrs. Jane Lombard  
Jun Makihara and Megumi Oka  
Meiji Yasuda America Incorporated  
Milbank LLP  
Mitsubishi Gas Chemical America, Inc.  
Mitsui Chemicals America, Inc.  
Mitsui Fudosan America, Inc.  
MoloLamken LLP  
Monex Group, Inc.  
MUFG Fund Services (USA) LLC  
Miss June Nagao  
NHK General Bureau for America  
Nikon Inc.  
Nishimura & Asahi NY LLP  
Nitto, Inc.  
The Norinchukin Bank  
Hiroko Onoyama  
Orient Corporation of America  
Permanent Mission of Japan to the United Nations  
Pillsbury Winthrop Shaw Pittman LLP  
The Saison Foundation  
SB Telecom America Corp.  
Mr. Matthew Sinks  
Subaru of America, Inc.  
TOKYU HOTELS CO., LTD.  
TV Asahi America, Inc.  
UNIQLO USA, LLC  
Warner Media Group  
Mr. Shuji Yagi and Mrs. Tomoko Yagi  
The Yomiuri Shimbun

**\$1,000 AND ABOVE**  
The Amphion Foundation, Inc.  
Anonymous (2)  
Anonymous <sup>M</sup>  
Ms. Ayumi Arafune  
Mike Audet and Saki Tanaka  
Myer Berlow and Deborah Barr  
Graeme Birchall and Katya Hansen  
Jim and Yuko Brumm  
Barbara Bertozzi Castelli  
Mr. and Mrs. Jeffrey Catanzaro  
Mr. David C. Chou  
Mr. Seth Coren and Yana Coren  
Mr. Robert Cory and Mr. Shuichiro Takeda  
Mrs. Anne N. Jones Dawson  
Ms. Bonnie L. Dixon  
Brendan and Jenifer Garvey  
Jennifer Gordon and Richard Shanley  
Lesley Nan Haberman  
Ms. Patricia Hallstein and Mr. Axel Kramer  
Ms. Tracey Hecht and Mr. David Smilow  
Dr. and Mrs. Thomas M. Heffner  
Taryn Higashi and Ivan Zimmerman  
Professor Keiko Honda  
Ms. Kathy and Mr. Mitchell Jacobson  
Ms. Hope Aldrich and Mr. Michael B. Jeffers  
Dale A. Jenkins and Sandra Panem  
Dr. Bic Kanayjorn  
Ms. Akiko Kimura  
Airi Kohlbach and Griffin Smith  
Akiko Koide and Shohei Koide  
Frodo and Sam Krull  
Ms. Ichun Lai

Japan Society received matching gifts from the following companies during the 2022—2023 Program Season:

Ameriprise Financial Services, Inc.  
Apollo Global Management, Inc.  
Bloomberg Philanthropy  
BNY Mellon  
The Capital Group Companies, Inc.  
Caterpillar Foundation

Monica and Edward Lenci  
Ms. Sarah Lubman  
Dr. Nancy C. Maruyama  
Geoff and Fumi Matters <sup>M</sup>  
Ms. Akiko Mikumo  
Mitsui Seiki USA Inc.  
Mr. Gary S. Moriwaki  
Moshi  
Ms. Atsuko Murayama Shilowitz  
Marjorie Neuwirth  
Edward and Ann Niehoff  
Mr. Rikiya Okuhara  
Pamela Perlman  
Mr. Eugene E. Reilly and Ms. Marlene Rosenthal  
Ronin Gallery NYC  
Ms. Estelle and Mr. Andrew Ross  
Richard and Momona Royce  
Mr. Frederick H. Schultz, Jr. and Ms. Carole Aoki  
Paul and Yoshiko Sheard  
Estate of Alan M. Suhonen  
Silicon Valley Bank  
Sarah Billingham Solomon  
Dr. Patricia M. Govern  
Sumitomo Mitsui DS Asset Management (USA), Inc.  
Mr. Thomas Sze  
Kiyoka Tanaka  
Nora and David Tezanos  
Mr. Alan Thomas  
Mrs. Barbara Tober and Mr. Donald Tober  
Mr. David Toberisky  
Nancy and Joe Walker  
Mr. Adam F. Weissenberg  
Roger L. Weston

Google Inc.  
HSBC USA Inc.  
IAC Group North America  
Johnson & Johnson  
MUFG (Mitsubishi UFJ Financial Group)  
S&P Global  
Texas Instruments Incorporated

# In Memoriam

Japan Society notes with sadness the loss of **Betty Borden**, our dear and long-time colleague and an important voice in the U.S.-Japan space. During her 23 years at Japan Society, among other things, Betty oversaw and directed the Innovator’s Network, which was launched as a Centennial project to provide opportunities for leaders and innovators from the U.S. and Japan to come together, share knowledge and insight, and catalyze positive social change. Her thoughtfulness and warmth were matched by her professionalism, hard work, and commitment to a cause much bigger than herself. Just as significantly, Betty managed the dispersal of the Society’s \$14 million Japan Earthquake Relief Fund over the years, using her insight and connections to advocate for long-term support in the recovery process. Her singular voice had a profound impact on how the fund was used to support the recovery of Tohoku after 3.11. So many people have reason to be grateful for her work on their behalf.

All of us at Japan Society will greatly miss the warmth and generous spirit of **Claudette Karabey**, our Director of Major and Planned Gifts. Claudette supported the remarkable growth of Japan Society’s Development team from 2008 through 2017 before leaving for a stint as Executive Director of French-American Aid for Children, a nonprofit organization in New York City aimed at supporting vulnerable French and American children. In April 2022, Claudette rejoined the Japan Society family as Director of Major and Planned Gifts. During her short tenure, she gave structure to our prospect pool of individual supporters and developed significant and meaningful donor relationships.

Japan Society has lost a dear friend with the passing of **Ryuichi Sakamoto**, the renowned composer, musician, actor, and environmental and peace activist. Sakamoto performed with violinist Anne Akiko Meyers at Japan Society’s *Concert for Japan*, a day-long benefit held for the reconstruction of the Tohoku region following the Great East Japan Earthquake, tsunami, and nuclear disaster. In 2013, John Zorn and Sakamoto came together for two improvisational concerts held at Japan Society. At *JAPAN CUTS: Festival of New Japanese Film* in 2016, Sakamoto introduced the U.S. Premiere of Yoji Yamada’s *Nagasaki: Memories of My Son*, which he had scored. Japan Society is privileged to have had Ryuichi Sakamoto as the Guest of Honor at our 110th Anniversary Arts & Culture Bash in November 2017.

Japan Society marks the passing of **Shoichiro Toyoda** (1925-2023), former Chairman of Toyota Motor Corporation and head of Keidanren (Japan Federation of Economic Organizations) from 1994-1998. Dr. Toyoda was a great friend and supporter of Japan Society. A frequent participant in Society programs, he chaired the Society’s Japan Advisory Committee for a number of years, and was Co-Chair of the Centennial Honorary Committee. One of the most tangible results of his vision and commitment was the Society’s Toyota Language Center, a national resource for Japanese language instruction and training. In 1996, Dr. Toyoda gave the keynote address at the Society’s Annual Dinner. Dr. Toyoda received the Japan Society Award in 2000 and the Japan Society Centennial Award in 2007.

We also mourn the loss of other friends and supporters of Japan Society. Their generosity and friendship will always be remembered.



# Funders

Japan Society programs were made possible by leadership support from Booth Ferris Foundation, Shiseido Americas, The Ford Foundation, and the New York State Council on the Arts with the support of the Office of the Governor and the New York State Legislature.

## SPECIAL SERIES & INITIATIVES

### K3 COUNCIL

This initiative was supported by Mitsubishi Heavy Industries America, Inc.; Donna Sternberg; and Kathy and Mitchell Jacobson.

***U.S.-Japan-Israel Collaboration: Shinzo Abe’s Vision, A Look Back and Forward*** was presented by the K3 Council.

***An Intimate Prelude to A Concert for Sugihara*** was co-organized by American Society for Yad Vashem, in cooperation with the K3 Council.

### U.S.-JAPAN WOMEN LEADERS INITIATIVE

This initiative was made possible, in part, by a generous grant from The Japan Foundation, with additional leadership support provided by Morgan Stanley. Additional support was provided by Sumitomo Mitsui Banking Corporation.

## BUSINESS & POLICY FORUM

This season was sponsored by Global Leader Citi and Corporate Partners Deloitte, Mizuho Americas, and Toyota.

Business & Policy Forum’s private events were generously supported by Element Capital Management LLC.

Additional support was provided by: National Association of Japan-America Societies, Inc.; Epstein Becker & Green, P.C.; Consulate General of Japan in New York; and Mizuho Research & Technology, Ltd. Transportation assistance was provided by All Nippon Airways Co., Ltd.

## FILM

The season was generously supported by ORIX Corporation USA and public funds from the New York City Department of Cultural Affairs in partnership with the City Council. Endowment support was provided by the Lila Wallace-Reader’s Digest Endowment Fund and The John and Miyoko Davey Endowment Fund. Additional season support was provided by The Globus Family, Timothy J. Hower, Akiko and Shohei Koide, David Toberisky, and Friends of Film. Transportation assistance was provided by Japan Airlines, the official Japanese airline sponsor of Japan Society Film.

***Monthly Anime*** was presented by Yen Press. Additional support for *Monthly Anime* was provided by Sapporo U.S.A.

***Tekkonkinkreet*** and ***Angel’s Egg***: The screenings of *Tekkonkinkreet* and *Angel’s Egg* were supported by Kodansha USA Publishing, LLC.

***ACA Cinema Project, The Female Gaze: Women Filmmakers from JAPAN CUTS and Beyond*** was co-presented by the Agency for Cultural Affairs, Government of Japan. The project was also supported by a lead corporate sponsor, Shiseido Americas.

***Princess Mononoke***: The screening of *Princess Mononoke* was supported by Kodansha USA Publishing, LLC.

***Seijun Suzuki Centennial*** was co-presented by The Japan Foundation.

***Rites of Passage: The Films of Shinji Somai*** was supported, in part, by a generous gift from The Globus Family.

## GALLERY

Exhibitions and Arts & Culture Lecture Programs at Japan Society were made possible, in part, by the Lila Wallace-Reader’s Digest Endowment Fund; the Mary Griggs Burke Endowment Fund established by the Mary Livingston Griggs and Mary Griggs Burke Foundation; The Masako Mera and Koichi Mera, PhD Fund for Education and the Arts; Peggy and Dick Danziger; Thierry Porté and Yasko Tashiro; and Friends of the Gallery. Support for Arts & Culture Lecture Programs were provided, in part, by the Sandy Heck Lecture Fund. Transportation assistance was provided by Japan Airlines, the official Japanese airline sponsor for Japan Society gallery exhibitions.

***Refashioning: CFGNY*** and Wataru Tominaga was supported, in part, by public funds from the New York City Department of Cultural Affairs in partnership with the City Council.

***Kyohei Inukai*** was supported, in part, by a grant from the Vilcek Foundation.

## PERFORMING ARTS

The season was sponsored by Lead Sponsor MetLife Foundation; and made possible, in part, by public funds from the New York City Department of Cultural Affairs in partnership with the City Council and the New York State Council on the Arts with the support of the Office of the Governor and the New York State Legislature. Major support was generously provided by Howard Gilman Foundation and Doug and Teresa Peterson. Endowment support was provided by the Lila Wallace-Reader’s Digest Endowment Fund and the Endowment for the Performing Arts, established with a leadership

gift from the Doris Duke Charitable Foundation. Additional support was provided by The Fan Fox and Leslie R. Samuels Foundation, Dr. and Mrs. Carl F. Taeusch II, Dr. Jeanette C. Takamura, Estate of Alan M. Suhonen, and Friends of the Performing Arts. Transportation assistance was provided by All Nippon Airways Co., Ltd. Yamaha was the official piano provider of Japan Society. *MetLife Meet-the-Artists Reception* was provided by MetLife Foundation.

Yukio Mishima’s *Hanjo* was supported by Doug and Teresa Peterson; presented in association with Catapult Opera and NYU Skirball.

***9000 Paper Balloons*** was supported by a grant from the Association of Performing Arts Professionals, made possible through support from The Andrew W. Mellon Foundation, and The Jim Henson Foundation. The development of *9000 Paper Balloons* was supported by The Jim Henson Foundation; a Foundation for Contemporary Arts Emergency Grant; the American Theater for Puppetry Arts; and Heather Henson and the Henson Carriage House. This work was commissioned and developed through the HERE Artist Residency Program (HARP), 2017-2021, and premiered digitally in November 2021.

***Behind-the-scenes of My Neighbour Totoro*** was supported by Doug and Teresa Peterson.

***Kotei | Makura Jido*** was supported by the Agency for Cultural Affairs, Government of Japan through the Japan Arts Council, and Arts Council Tokyo (Tokyo Metropolitan Foundation for History and Culture).

***note to a friend*** was co-produced with Tokyo Bunka Kaikan and was supported by Doug and Teresa Peterson, with special cooperation from The Japan Foundation, New York. This project was presented by Japan Society as part of PROTOTYPE Festival 2023. Additional support was provided by the New York State Council on the Arts with the support of the Office of the Governor and the New York State Legislature.

***AKUTAGAWA*** was supported by Arts Council Tokyo (Tokyo Metropolitan Foundation for History and Culture), the ArtsCONNECT program of Mid Atlantic Arts with support from the National Endowment for the Arts, The Jim Henson Foundation, The Osaka Community Foundation / anonymous fund No.22, and The Japan Foundation.

***I’m Trying to Understand You, But...*** was supported by The Saison Foundation.

Performances of ***Extinction Rituals*** at Japan Society were made possible in part by the New York State Council on the

FY 2022—2023

Arts with the support of the Office of the Governor and the New York State Legislature and The Harkness Foundation for Dance. *Extinction Rituals* was produced by LEIMAY and supported, in part, by an award from the National Endowment for the Arts, Creative Capital, Japan Foundation, and the New York State Council on the Arts.

## TALKS+

Season support was provided by an anonymous donor and the Sandy Heck Lecture Fund.

***Living Traditions*** webinar series was co-presented with the Japan Institute of Portland Japanese Garden and supported by the Government of Japan.

***Sake Tasting Workshop: Flavors Across Japan and Annual Sake Lecture & Tasting: In Search of the Perfect Sip*** were co-organized by the Sake Export Association. The *Food Talk* Series was sponsored by Kikkoman Corporation.

***Joining Forces on Healthcare: Kanagawa Governor Yuji Kuroiwa*** was co-organized by the Kanagawa Prefectural Government.

## EDUCATION & FAMILY

Education and Family Programs were generously supported by an anonymous donor, ORIX Corporation USA; Mitsubishi Corporation (Americas), public funds from the New York City Department of Cultural Affairs in partnership with the City Council; The Masako Mera and Koichi Mera, PhD Fund for Education and the Arts; The Norinchukin Foundation; and Friends of Education & Family Programs.

Japan Society’s Professional Development Programs were made possible by a generous grant from an anonymous funder.

The Japan Society Junior Fellows Leadership program was supported by generous grants from an anonymous family foundation and ITO EN (North America) INC. Transportation assistance was provided by All Nippon Airways Co., Ltd.

Japan Society School Partnerships were made possible by a generous grant from MetLife Foundation and supported by the United States-Japan Foundation and MUFG Bank, Ltd.

## LANGUAGE CENTER

Support for Japan Society’s Language Center was provided, in part, by Mark F. Goldfield and Mary E. Hatch, Christopher Hong, Steven Giordano, Juan Ruiz Gomes, and Dr. Bic Kanayjorn.



# Consolidated Statement of Activities

June 30, 2023

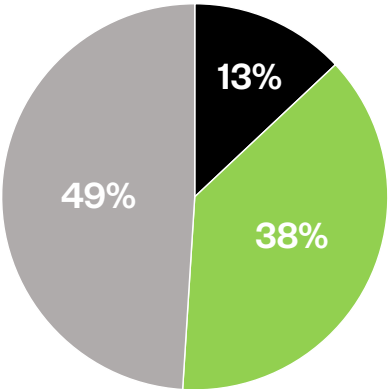
SUPPORT AND REVENUE	2023					2022
	NET ASSETS WITHOUT DONOR RESTRICTIONS			NET ASSETS WITH DONOR RESTRICTIONS	TOTAL	TOTAL
	OPERATING	BOARD DESIGNATED	TOTAL			
Contributions, grants and membership	\$2,454,097	—	\$2,454,097	\$2,822,722	\$5,276,869	\$5,037,196
Revenue from functions and activities	1,758,649	—	1,758,649	—	1,758,649	1,348,214
Allocated investment return	3,064,888	2,355,067	5,419,955	—	5,419,955	3,279,162
Operating investment return (loss)	(28,597)	—	(28,597)	—	(28,597)	(153,232)
Special events, net of direct expenses	1,359,150	—	1,359,150	—	1,359,150	1,329,609
Net assets released from restrictions	3,103,589	—	3,103,589	(3,103,589)	—	—
Total support and revenue	11,711,776	2,355,067	14,066,843	(280,817)	13,786,026	10,840,949
OPERATING EXPENSES						
Program services						
Gallery	1,673,716	—	1,673,716	—	1,673,716	1,789,952
Performing Arts	1,638,403	—	1,638,403	—	1,638,403	1,314,425
Film	507,714	—	507,714	—	507,714	342,506
Talks	—	—	—	—	—	303,831
Business and Policy Forum	941,619	—	941,619	—	941,619	771,499
Language Center	1,165,418	—	1,165,418	—	1,165,418	1,035,872
Education and Family	604,692	—	604,692	—	604,692	388,135
Media & Marketing	1,555,802	—	1,555,802	—	1,555,802	1,240,976
Membership	292,174	—	292,174	—	292,174	298,650
Japan Earthquake Relief Fund	—	—	—	—	—	90,800
Total program services	8,379,538	—	8,379,538	—	8,379,538	7,576,646
Supporting activities						
General	3,599,816	—	3,599,816	—	3,599,816	2,820,311
Development	1,804,738	—	1,804,738	—	1,804,738	1,296,141
Total supporting activities	5,404,554	—	5,404,554	—	5,404,554	4,116,452
Total expenses	13,784,092	—	13,784,092	—	13,784,092	11,693,098
Excess (deficiency) of revenue over expenses from operations before non-operating revenue	(2,072,316)	2,355,067	282,751	(280,817)	1,934	(852,149)
Non-operating revenue						
Total investment return, net of allocation to operations	2,893,188	(3,916,309)	(1,023,121)	2,278,484	1,255,363	(15,907,980)
Increase (decrease) in net assets	820,872	(1,561,242)	(740,370)	1,997,667	1,257,297	(16,760,129)
Net assets, beginning of the year	7,536,138	7,730,561	15,266,699	57,820,570	73,087,269	89,847,398
Net assets, end of year	\$8,357,010	\$6,169,319	\$14,526,329	\$59,818,237	\$74,344,566	\$73,087,269

# Consolidated Statement of Financial Position

June 30, 2023

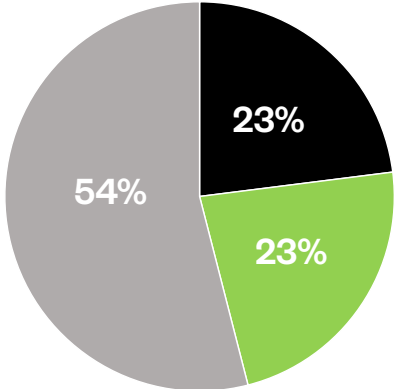
ASSETS		JUNE 30, 2023	JUNE 30, 2022
Cash and cash equivalents		\$1,188,760	\$1,297,674
Cash designated for Japan Earthquake Relief Fund		9,604	9,595
Investments, at fair value		67,157,963	66,019,061
Receivables and other assets		683,403	600,303
Land, building and equipment, net		6,341,162	6,153,907
Total assets		\$75,380,892	\$74,080,540
LIABILITIES AND NET ASSETS			
Liabilities	Accounts payable and accrued expenses	\$748,546	\$ 721,800
	Deferred membership revenue	287,780	271,471
Total liabilities		1,036,326	993,271
Net assets	Net assets without donor restrictions		
	Operating	8,357,010	7,536,138
	Board-designated	6,169,319	7,730,561
	Total without donor restrictions	14,526,329	15,266,699
Net assets	Net assets with donor restrictions		
	Program restricted	12,519,636	10,521,969
	Endowment fund	47,298,601	47,298,601
	Total with donor restrictions	59,818,237	57,820,570
	Total net assets	74,344,566	73,087,269
Total liabilities and net assets		\$75,380,892	\$74,080,540

Operating Income



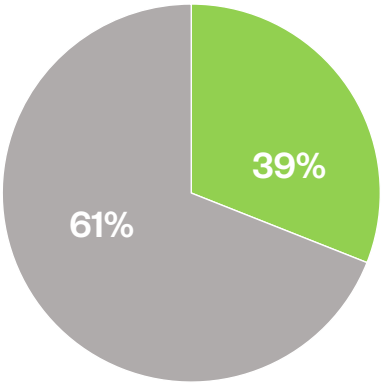
- Contributed
- Investment
- Earned

Sources of Contributed Support



- Corporations
- Foundation & Government
- Individuals

Operating Expenses



- Program Services
- Supporting Services



# Reach

Online Visitors, Fans, Followers & Subscribers  
As of June 30, 2023



Instagram <https://www.instagram.com/japansociety/>  
43,122 followers



Facebook [Facebook.com/japansociety](https://www.facebook.com/japansociety)  
287,766 followers



Twitter/X [Twitter.com/japansociety](https://twitter.com/japansociety)  
81,687 followers



LinkedIn [linkedin.com/company/Japan-society](https://www.linkedin.com/company/Japan-society)  
33,524 followers



TikTok <https://www.tiktok.com/@japansocietynyc>  
6,065 followers



YouTube [youtube.com/japansocietynyc](https://www.youtube.com/japansocietynyc)  
3,294,621 YouTube video views (in the past year)  
39,216 New subscribers (in the past year)  
60,932,040 Lifetime views



Japan Society [japansociety.org](https://japansociety.org)  
32,645 Average unique views per month  
391,745 Total unique visitors  
1,3383,745 Total page views  
552,472 Total visits

# Staff

### EXECUTIVE OFFICE

Joshua W. Walker, Ph.D.  
*President & CEO*

Emi Marica,  
*Board Liaison & Manager of the Office of the President*

Mia Saidel  
*Manager, Strategic Initiatives*

Miwa Suzuki  
*Director and Head of Japan Strategy & Global Initiatives*

### ADMINISTRATION & OPERATIONS

Andrew Connor  
*Chief Operating Officer*

### BUILDING SERVICES

John Agapito  
*Director, Building Services*

Carlos Estrada  
*Porter*

### FINANCE

Lisa Bermudez  
*Chief Financial Officer/ Executive Vice President*

Tsay Huang  
*Accounts Receivable Manager*

Moji Oke  
*Payroll Manager*

Roseann Winter  
*Financial Controller*

### HOUSE OPERATIONS

Lydia Gulick  
*Director of Events*

Tatum Alli  
*Rental Event Manager*

Carmen Ben  
*Manager, House Activities*

Jahi Johnson  
*Welcome Desk Associate*

Robert Hardy  
*Welcome Desk Associate*

Kyra Arsenault Rivera  
*Welcome Desk Associate*

Taina Rodriguez  
*Welcome Desk Associate*

Michael Wilson  
*Welcome Desk Associate*

### HUMAN RESOURCES

William Rahardjo, Human Resources Manager

### INFORMATION TECHNOLOGY

Archie Alegre  
*Desktop Support Engineer*

Julia Jin  
*Manager, Data Operations*

### DEVELOPMENT

Gregory Corsico  
*Chief Development Officer*

Nicholas Bianchi  
*Associate, Development Operations*

Kieran Callinan  
*Assistant Director, Corporate Partnerships*

Pauline Fan Bu  
*Associate, Corporate Partnerships*

Lisa Goldenberg  
*Senior Director, Development*

Nozomi Iizuka  
*Director, Corporate Partnerships*

Rebecca Menasché  
*Associate, Foundation & Government Relations*

Mika Nagasaki  
*Director, Foundation & Government Relations*

Ann Niehoff  
*Development Officer*

Brandy Wang  
*Associate, Donor Engagement*

Kimberly Woodward  
*Director, Development Operations*

Sandy Zheng  
*Associate, Corporate Partnership*

### MEDIA & MARKETING

Chiharu “Cara” Arai  
*Chief Marketing Officer*

Nestor Martinez  
*Senior Website Manager*

Camille Miller  
*Direct Marketing & Social Media Assistant Manager*

Allison Rodman  
*Director, Communications*

Cynthia Sternau  
*Managing Editor & Archivist*

Ben Warren  
*Head of Creative & Design*

Kazuho Yamamoto  
*Marketing and Communications Manager*

### BUSINESS & POLICY FORUM

Tomoko Okuno  
*Senior Director, Business & Policy*

Yuka Terada  
*Deputy Director, Business & Policy*

Adam Goebler  
*Program Officer, Business & Policy*

Yukari Kiyotake  
*Program Officer, Business & Policy*

### EDUCATION & FAMILY

Yumi Nagasawa, Ed.D.  
*Director, Education & Family Programs*

Timothy Nassau  
*Education Officer*

Valerie Santelli  
*Education Officer*

### FILM

Peter Tatara  
*Director of Film*

Alexander Fee  
*Film Programmer*

### GALLERY

Tiffany Lambert  
*Curator and Interim Director*

Daqian Cao  
*Exhibition Manager*

Ayaka Iida  
*Assistant Curator*

Stefani Oh  
*Curatorial Assistant*

### LANGUAGE CENTER

Tomoyo Kamimura  
*Senior Director, Language Center & Library*

Megan Brindle  
*Assistant Director, Language Center*

Aya Wilson  
*Language Center Manager*

Kimberly Campuzano  
*Language Center Assistant*

Yuki Aizaki, *Instructor*

Yuko Aizawa, *Instructor*

Yukari Aoki, *Instructor*

Sanae Asai, *Instructor*

Megumi Barringer, *Instructor*

Keiko Hammer, *Instructor*

Yumiko Kakutani, *Instructor*

Momoyo Kitaura, *Instructor*

Rika Kobayashi, *Instructor*

Mana Kobuchi, *Instructor*

Kazue Kurahara, *Instructor*

Ben Milam, *Instructor*

Yumi Mori, *Instructor*

Mari Nakamura, *Instructor*

Mami Nakanishi, *Instructor*

Sanshiroh Ogawa, *Instructor*

Kenko Ogino, *Instructor*

Kaoru Shinohara, *Instructor*

Atsuko Shio, *Instructor*

Yukie Yamaguochi, *Instructor*

### PERFORMING ARTS

Yoko Shioya  
*Artistic Director*

Futoshi Miyai  
*Director, Productions & Technical Management*

Amanda Waddell  
*Senior Program Officer*

Karin Yamamoto  
*Program Officer*

### TALKS+

Tomomi Sekiya  
*Head of Event Management*

Anna Cabasso  
*Event Manager*

Alex Rosenthal  
*Event & Marketing Associate*

▶ Click here  
for current Staff list

—As of June 30, 2023







333 East 47th Street  
New York, NY 10017

COVER:

Ryunosuke Akutagawa's short story *The Dragon*, told through  
the traditional puppetry style *kuruma ningyo* in AKUTAGAWA,  
© Richard Termine

